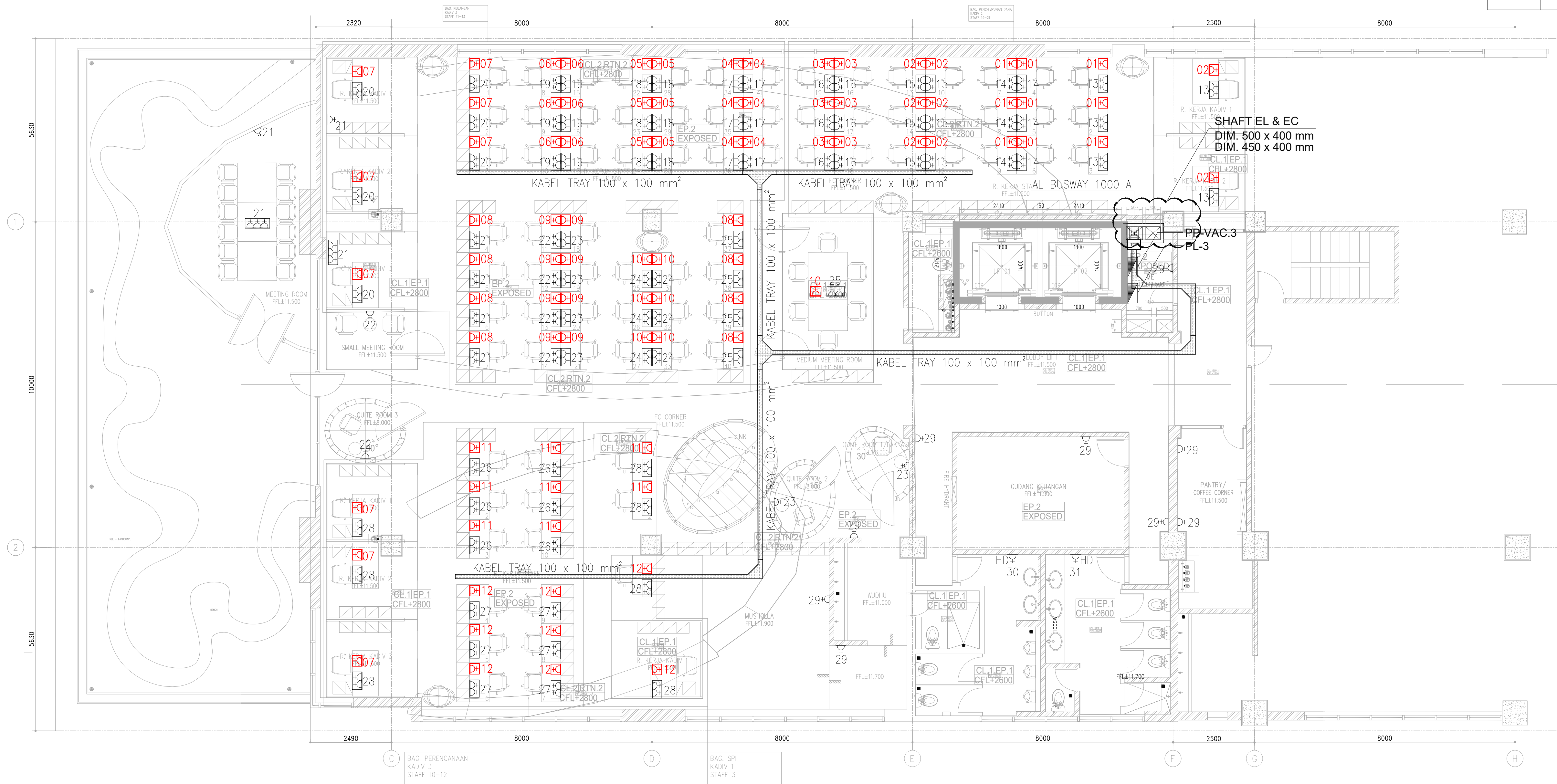




KETERANGAN :	
	STOP KONTAK 16A 1Ø, 200W
	STOP KONTAK HAND DRYER 16A 1Ø, 1.500W
	STOP KONTAK MEJA 3PCS 16A 1Ø, 450W
	RAK KABEL
	PANEL DISTRIBUSI



<div>OWNER/CLIENT</div> <div></div> <div>APPROVED : .../.../...</div> <div>..... (name)</div> <div>..... (position)</div> <div>(signed) ..... (Dep./Div.)</div>	<div>PROJECT</div> <div>BPDP KELAPA SAWIT</div> <div>Jl. Medan Merdeka Tim, RT.7/RW.1, Gambir, Kec. Gambir, Kota Jakarta Pusat, Daerah Khusus Ibukota Jakarta 10110</div>	<div>INTERIOR DESIGN CONSULTANT</div> <div>PT. <b>M</b>ADEA AGKASAMA</div> <div>Jl. Hati Suci No. 4 Gd. Sakura Lt. 2 Room 201 Kel. Kampung Bali, Kec. Tanah Abang, Jakarta Pusat Telp. 021 - 2303483 , Fax. 021 - 2303483 APPROVED : //</div>	<div>MEP CONSULTANT</div> <div> <b>PT. DUTA PRATAMA ENGINEERING</b> MECHANICAL &amp; ELECTRICAL ENGINEER</div> <div>Rukan Taman Menyura Blok M No. 37, Jl. Batu Mulia No. 1 Menyura Utara Kemang Sari - Jakarta Barat 11620 Phone : 021-5845546, 5845547, 5845556, Fax : 021-58474531 Email : dpept.me@gmail.com, ptidape@yahoo.com</div>	<div>DRAWING TITLE</div> <div>DENAH INSTALASI KOTAK KONTAK RAK KABEL &amp; POSISI PANEL LANTAI 3</div> <div>SCALE : 1:150</div> <div>ALL MEASUREMENT MUST BE CHECKED AT BY SITE BY THE CONTRACTORS AND ANY DIFFERENCES REPORTED/INITIATED TO THE DESIGNER FOR CLARIFICATION BEFORE PROCEEDING.</div>	<div>REVISION :</div> <div>#</div> <div>DATE</div>	<div>DRAWN</div> <div>Sangaji</div> <div>DATE : 15/05/24</div> <div>CHECKED</div> <div>Jefri</div> <div>DATE : 15/05/24</div> <div>DRAWING FOR</div>	<div>DRAWING NUMBER</div> <div>EL-304</div> <div>PAGE</div> <div>TENDER</div>
						<div>DATE : 2024/05/10</div>	